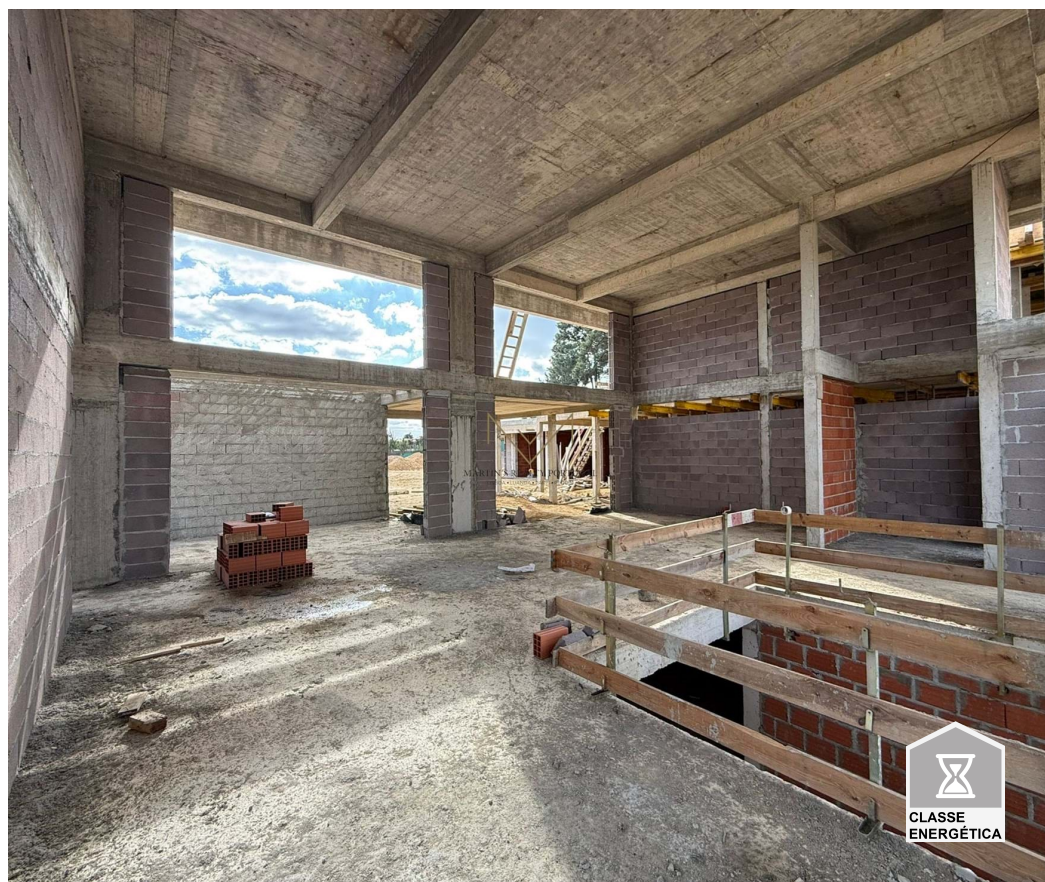




## Charneca de Caparica e Sobreda - Villa



4	5	500	2500	Garage	Swimming Pool	<b>2 450 000 €</b> (EUR €)
Bedrooms	Bathrooms	Area (m²)	Land Area (m²)			

## LUXURY 4 BEDROOM VILLA WITH INDOOR POOL AND 2500M2 OF LAND

Discover the charm and versatility of this exclusive property in the heart of Almada. With a modern design and high-quality finishes, this one-bedroom apartment is the perfect getaway for those looking to live in the city in style. Situated in a convenient location, close to all amenities, this property is ideal for those looking for a cosmopolitan lifestyle. Get ready to fall in love with this unique space, where elegance and comfort meet. Schedule a visit today and discover your new home in Almada.

4 BEDROOM VILLA WITH INDOOR AND OUTDOOR POOL,  
2500m2 OF LAND,  
3 SUITES,  
1 OFFICE,



**André Martins**

912670462 <sup>2</sup>

info@martinrealtypt.pt

**T +351 912 670 462 <sup>2</sup> · E info@martinrealtypt.pt**  
**Rua António de Andrade, 1125C, Charneca De Caparica**  
**AMI 13631**

<sup>1</sup> (Call to national fixed network) | <sup>2</sup> (Call to national mobile network)



GYMNASIUM  
CINEMA  
ROOM WITH HIGH HEIGHT AND OPEN SPACE,  
GARAGE FOR 6 CARS,  
INDOOR AND OUTDOOR GARDEN.  
QUIET AREA AND AWAY FROM THE NOISE.

## Property Features

- Heating
- Proximity: Airport, Beach, Golf course, Shopping, Restaurants, City, Hospital, Pharmacy, Public Transport, Schools, Public Swimming Pools, Playground
- Terrace
- Built year: 2024
- Basement
- Views: Countryside views, Pool view, Garden view
- Security alarm
- Electric shutters
- Borehole
- Gym
- Domotics
- Uninterrupted views
- Pool
- Jacuzzi
- Garage
- Laundry
- Storage / utility room
- Video entry system
- Double glazing
- Electric garage gate
- Quiet Location
- Barbecue
- Security door
- Energetic certification: In process



**André Martins**

912670462 <sup>2</sup>

info@martinrealtypt.pt

**T +351 912 670 462 <sup>2</sup> · E info@martinrealtypt.pt**  
**Rua António de Andrade, 1125C, Charneca De Caparica**  
**AMI 13631**

<sup>1</sup> (Call to national fixed network) | <sup>2</sup> (Call to national mobile network)